

Village Garden Center

& Landscape Service

ISSUE 36 February 2013

By Eva Soud

We at the Garden Center are very excited about the following NEW plants we will be featuring for Spring 2013. We will be selling them in 2 gal containers for \$24.95 and they will be ready for sale in early April. Quantities will be limited so if you are interested in any of them please give us a call and we will put you on our waiting list, and when they are ready we will give you a call. Be the first to enjoy these lovely plants. Are you ready..... For the NEW Hydrangea's! All plants do well in full sun to part shade. They make excellent cut flowers and dry well for arrangements.

Enjoy!

Hydrangea macrophylla 'Xian' Everlasting

Size 3-4' tall by 3-4' wide

Hardiness zones 4-9

Sun/Shade

Bloom time May-June

Hydrangea Everlasting Opal

In this issue

Page 1

thru page 6 ----- NEW Hydrangeas

Page 7-----From the Garden of Eva

Page 8 & 9-----Thyme in the Garden

Page 10-----Grass Spring Wreath

is a brand new selection with amazing potential. Sturdy, mop head blooms on thick, upright stems emerge bright, lavender-pink. As the blooms mature, they change to lime green and develop pink picotee markings, but remain strong and sturdy as a cut flower.

The final aging stage of this grand and stately beauty is celadon green,



Hydrangea macrophylla 'Xian' Everlasting

a favorite of mine and many brides too. This is one plant you'll want in your garden for viewing and for cutting year after year.

Gardeners will love the mopheads of the Everlasting Series with their variety of colors, handsome foliage, and sturdy plants. Each stem is a bouquet, and even a young plant makes a show worthy of Mother's Day.

Be sure to create a display of Everlasting hydrangeas as a gift, perhaps in a planter ready to adorn the doorstep.



Hydrangea macrophylla 'Hokomano' Everlasting

Size 3-4' tall by 3-4' wide Hardiness zones 5-9

Sun/Shade

Bloom time

May-September, old and new wood



Common Name Noblesse Everlasting Hydrangea

Hydrangea Everlasting Noblesse is one of the newest selections from this amazing line of great performers. Crisp, celery green flowers are brightened by white centers with complimentary purple eyes. As the blooms mature, the white is not as prominent, turning a more saturated green. A strong grower, with remarkable flower power, Noblesse is a lovely choice for a garden setting, while doubling as the perfect cut flower for weddings and other important events.





Hydrangea macrophylla 'Hortmaja'

Everlasting Jade

Size 30-36" tall by 30-36" wide Hardiness zones 5-9

Sun/Shade Bloom time May-Sept



Flowers open the softest lime green and age to a saturated deep green with fire engine red tips.

Hydrangea macrophylla 'Hokomarevo' Everlasting™ Revolution

Size 24-30" tall by 24-30" wide Sun/Shade

Hardiness zones 5-9 Bloom time May- Sept



Repeat flowering hydrangeas often disappoint because they bloom so sporadically. But this plant will enlighten your garden with a blooming revolution. Revolution not only flowers on new and old wood, making it sure to bloom for everyone, but the flowers fade to magical color combinations of deep pink, maroon and true blue, adding green highlights as they age over a long period of time.

Hydrangea macrophylla 'Hortmoc' Everlasting™ Ocean

Size 24-30'' Tall by 24-30'' wide Hardiness zones 5-9

Sun/Shade

Bloom time May-Sept



Everlasting Ocean is the perfect plant to give to someone who has just welcomed a brand new baby girl into his or her life. Many long-lasting, baby pink, cupped flowers with ruffled edges give the appearance of a bundle of pink umbrellas tied in a bow. The blooms are held high atop sturdy green branches making this a plant your friends and neighbors will covet. As they age, the flowers settle into a darker shade of pink and creamy white, and finally lime green with dark pink edges

Hydrangea macrophylla 'Hortmahar' Everlasting™ Harmony

A gem for gardens, gifts and vases.



Everlasting Harmony is a strong plant adorned in long lasting soft pink and cream flowers. In a harmonious parade of color, they age to a deeper pink or blue tone with green edges, depending on the acidity of the soil, and then fade to a soft celery green, yet remain beautiful on the plant or in a vase for weeks. Plant this plant in your garden and then bring some flowers in everyday to enjoy their soft, feminine color as they age.



Blue tone with green edges of the
'Hortmahar' Everlasting Harmony

Hydrangea macrophylla 'Kolmgarip' Everlasting™ Garnet



Size 3-4' Tall by 3-4' wide Sun/Shade

Hardiness zones 5-9 Bloom time May-June on new and old wood

Hydrangea Everlasting Garnet is a brand new selection with amazing potential. Sturdy, mop head blooms on thick, upright stems emerge bright, reddish-pink. As the blooms mature, they change to lime green and develop pink picotee markings, but remain strong and sturdy as a cut flower. The final aging stage of this grand and stately beauty is total lime green.

Bred by the brilliant breeding team at Kolster BV, in The Netherlands, Everlasting™ Amethyst, Coral, Garnet, Harmony and Ocean combine the bold blooms of cut flowers with the long lasting qualities of a gift item and the hardiness of a shade-loving garden plant all in one. This is an extremely versatile series that honestly goes from gift to garden. Shiny, dark green foliage complements the flowers and makes a lovely foil for all other plants. Each selection is breathtaking while flowering in the spring, and all dry to lovely shades, whether you cut the blooms for enjoyment inside or leave them to dry naturally on the plants in the garden.



Hydrangea macrophylla 'Hokomathyst'

Everlasting™ Amethyst

Size 24-30'' Tall by 24-30'' wide Hardiness zones 5-9

Sun/Shade Bloom time May-Sept

Everlasting Amethyst has sturdy, long lasting flowers held high on thick, upright stems that begin fuchsia pink or violet blue, depending on the acidity of the soil. The flowers age to a reddish pink with lime green markings that last for weeks.



Hydrangea macrophylla 'Hokomac' Everlasting™ Coral



Size 24-30'' Tall by 24-30'' wide

Hardiness zones 5-9

Sun/Shade

Bloom time May-Sept



Everlasting Coral is covered in long lasting, saturated pink flowers. Strong, round flowers on sturdy plants begin coral pink or blue, depending on the soil acidity, and over a few weeks time mature to a near red with violet edges, giving the plant lots of dimension and character. The final color is lime green with white edges. A clever, colorful addition to any garden or container with flowers that last for weeks and weeks.

From the garden of Eva

Chocolate Shortcakes

With Sour Cherry Topping

Cherry Topping

5 cups fresh sour cherries, pitted (water-packed are fine too, drain well)

3/4 cup honey, plus

1/4 cup balsamic vinegar

1/4 teaspoon cinnamon

Shortcake Biscuits

2 cups all-purpose flour (approximately)

2/3 cup sugar

2/3 cup cocoa

2 teaspoons baking powder

1/2 teaspoon baking soda

1/2 teaspoon salt

1/4 lb cold butter, cut into 1/2 inch pieces

2 large egg yolks

3/4 cup buttermilk

Garnish

1 1/2 cups heavy cream

1 1/2 tablespoons

confectioners' sugar

(+ additional)

3/4 teaspoon vanilla extract

Directions:

1) For cherry topping: In small saucepan combine all topping ingredients and cook over medium-high heat, until cherries start to release their juice and the liquid thickens and becomes syrupy, 6-7 minutes; cool and refrigerate until needed (you can make this up to 1 day ahead).

2) For shortcake biscuits: Preheat oven to 350F and set rack in middle of oven; combine all dry ingredients in a large bowl until blended; rub butter into flour mixture with your fingertips until mixture resembles coarse meal; in a small bowl, whisk egg yolks with buttermilk to blend; add to flour mixture and stir just until evenly moistened; turn dough out onto a floured board and, with lightly floured hands, knead just until it comes together (if the dough is very sticky, sprinkle on some additional all purpose flour); pat out to about 1 1/4 inches thick and cut into rounds with a 3 inch cutter; gather dough scraps and pat out again to make remaining shortcake biscuits; set 2 inches apart on a large baking sheet; bake biscuits for approximately 25 minutes, or until golden-brown, and transfer to a rack to cool completely.

3) For whipped cream: Beat cream, sugar and vanilla until soft peaks form.

4) To assemble: Slice shortcake biscuits in half and set bottoms of biscuits on 6 dessert plates; dollop generously with whipped cream and distribute cherry topping evenly over the cream; place biscuit tops over cherries at a slight angle and sprinkle tops lightly with confectioners' sugar.



All you need is love.

But a little chocolate now

and then doesn't hurt.

Thyme in the Garden

One of the most commonly asked questions at garden centers worldwide is

It's easy, really!

How do I prune my hydrangeas?

First, some definitions:

There are three ways in which hydrangeas flower– those that flower on new wood, those that flower on old wood, and now there are some newer selections that flower on new and old wood and therefore they require little or no pruning each year.

Old Wood means branches that have been on the hydrangea since the summer before the current season.

New wood means branches that will develop on the plant during the current growing season.

Method I is for hydrangea types that bloom on old wood (last year's branches). Prune these hydrangeas only in the summer before August, before they set their bloom buds for the next year. ?? This group of hydrangeas produce flower buds on hydrangea stems around August, September or October for the following summer's blooms. If those stems are removed (pruned) in the fall, winter, or spring, the bloom buds will be removed, and there may be little or no bloom the following summer (usually June/July for the northern hemisphere).

Method II is for hydrangeas that flower on new wood (new branches). This type of hydrangea is determined to flower every single year, no matter how they are treated. Prune these plants in the late summer after they have bloomed. They cannot be pruned in the spring when they are preparing to flower, because you will cut off the flower buds.

Method III is for hydrangeas that flower on both new and old wood. Prune these hydrangeas only if they are getting too large for the space or if you want to remove old flowers. The best time to prune them is after they flower in the late summer. If you prune them much beyond late summer, you will risk removing the flower buds that are developing on the current branches.

The next most commonly asked question is

How do I change the color of the flowers?

To change the flower from Blue to Pink:

For hydrangea flowers to be pink, the plants must not take up aluminum from the soil. If the soil naturally contains aluminum, you must try to keep it away from the hydrangea's system. Try this if you would rather have pink flowers:

Add dolomitic lime several times a year. This will help to raise the pH. Shoot for a pH of about 6.0 to 6.2 (If it goes above 6.4 hydrangeas may experience an iron deficiency, which will make their leaves turn yellow). Since hydrangeas take up aluminum best at lower pH levels, raising the pH will help to keep the bluing effect of aluminum out of the hydrangea's system.

Use a fertilizer with high levels of phosphorus. Phosphorus helps to prevent aluminum from creeping into the system of the hydrangea. Choose a fertilizer close to the ratio of 25/10/10 (Phosphorus is the middle number)

In areas that naturally produce blue hydrangeas (soils with aluminum), consider growing pink hydrangeas in large pots. If hydrangeas are grown in pots, it would be best to use potting soil, not garden or top soil, since these mixes should not have aluminum in them. In a pot, it will be much easier to control the requirements for growing pink hydrangeas.

To change the flower from Pink to Blue:

To make hydrangea flowers blue, aluminum must be present in the soil. To ensure that aluminum is present, aluminum sulfate may be added to the soil around the hydrangeas.

We recommend that a solution of 1/2 oz (1 Tbsp) aluminum sulfate per gallon of water be applied to plants throughout the growing season. Important: Make sure your soil is a little wet before you do this because the mixture can burn dried out roots.

To make the aluminum available to the plant, the pH of the soil should be low (5.2-5.5). Adding aluminum sulfate will lower the pH of the soil. Another method for lowering the pH is to add organic matter to the soil such as coffee grounds, fruit and vegetable peels, grass clippings etc.

If the soil naturally contains aluminum and is acidic (low pH) the color of the hydrangea will automatically be blue and/or purple.

The choice of fertilizer will also affect the color change. A fertilizer low in phosphorus and high in potassium is helpful in producing a good blue color (25/5/30 is good). Potassium is the last number). Super-phosphates and bone meal should be avoided when trying to produce blue.

Note: Unfortunately, it is virtually impossible to turn a hydrangea blue forever if it is planted in soil with no aluminum and that is highly alkaline (chalky). You have to be very diligent in keeping the soil conditioned on a continual basis as stated above.



Grass Spring

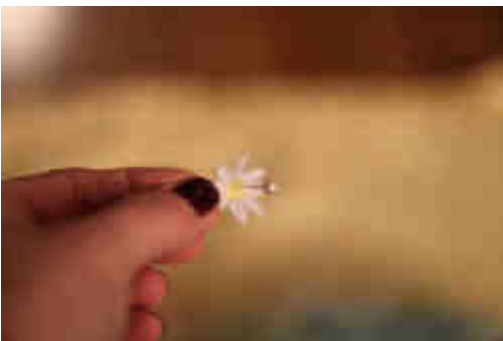
Wreath

To make it, you'll need an 8 inch Styrofoam wreath form, some fun fur yarn, flower trim and pearl tipped floral pins.



Tie the fun fur around the wreath form then start wrapping. I wrapped the yarn close together and covered the whole wreath form.

I still had a lot left over so I wrapped it one more time, filling in any gaps.



I cut up the daisy trim so I had individual flowers.

Then take a florist pin (pearl tips are nice) and insert the pin through the daisy to attach to the wreath.

Sprinkle them around the wreath in a random fashion.

I had some ribbon left over

I used to hang my wreath.



And there you have it.

Have fun picking colors to match your home and you will have created a inexpensive wreath that will last for years.